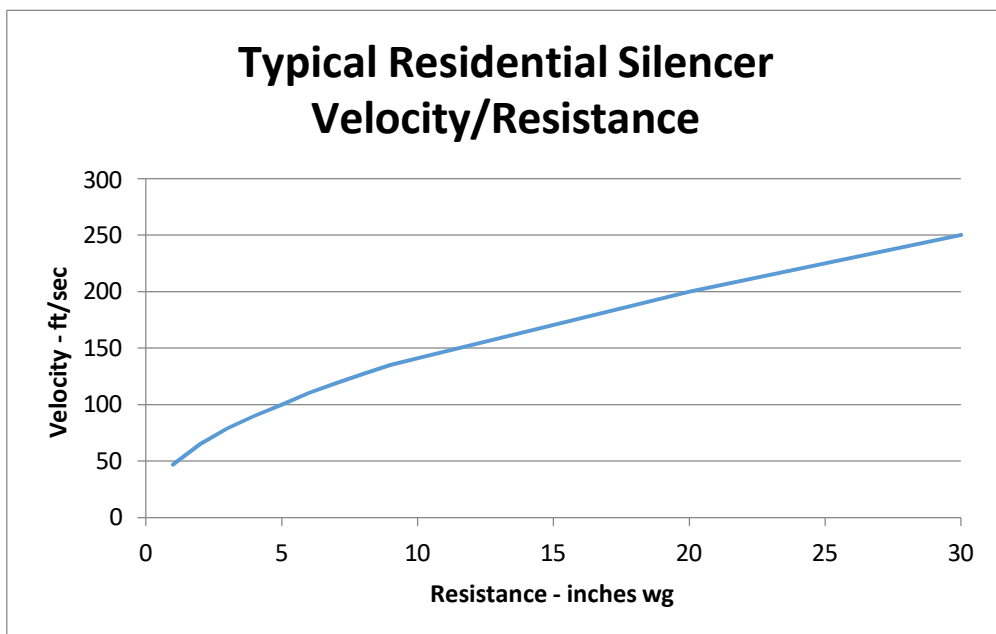
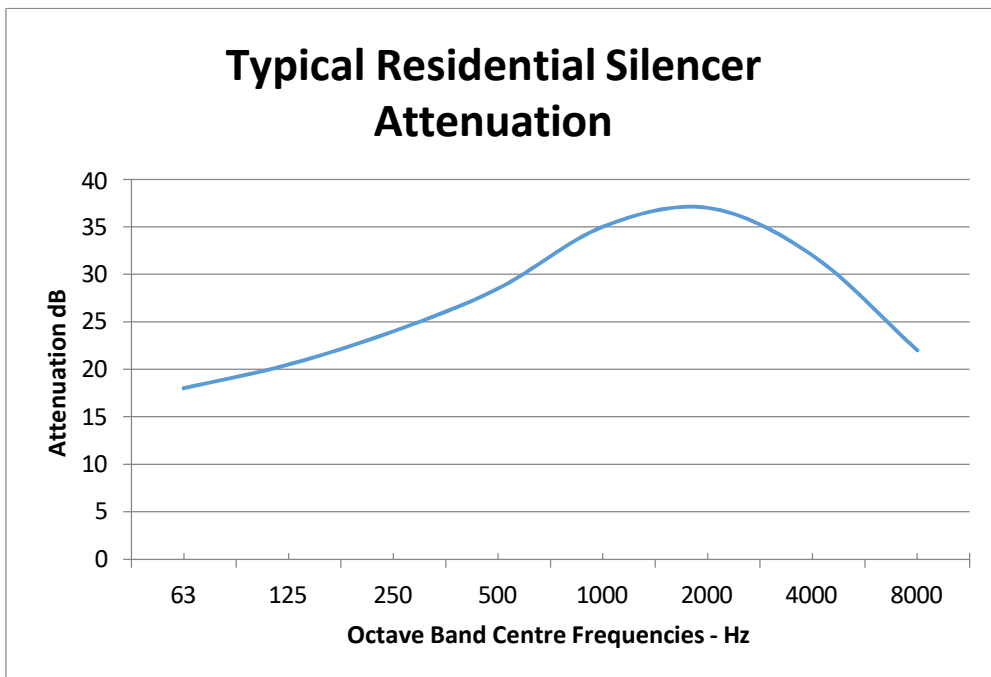
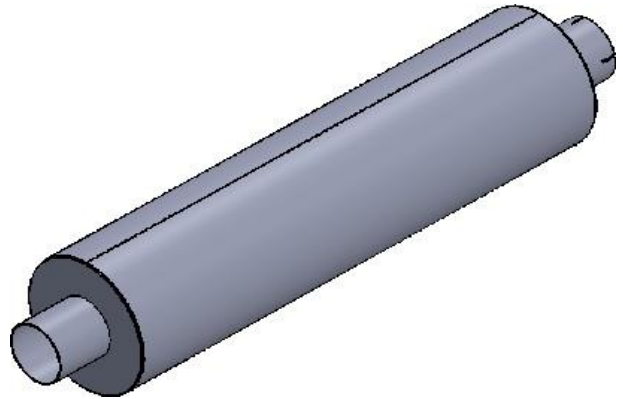


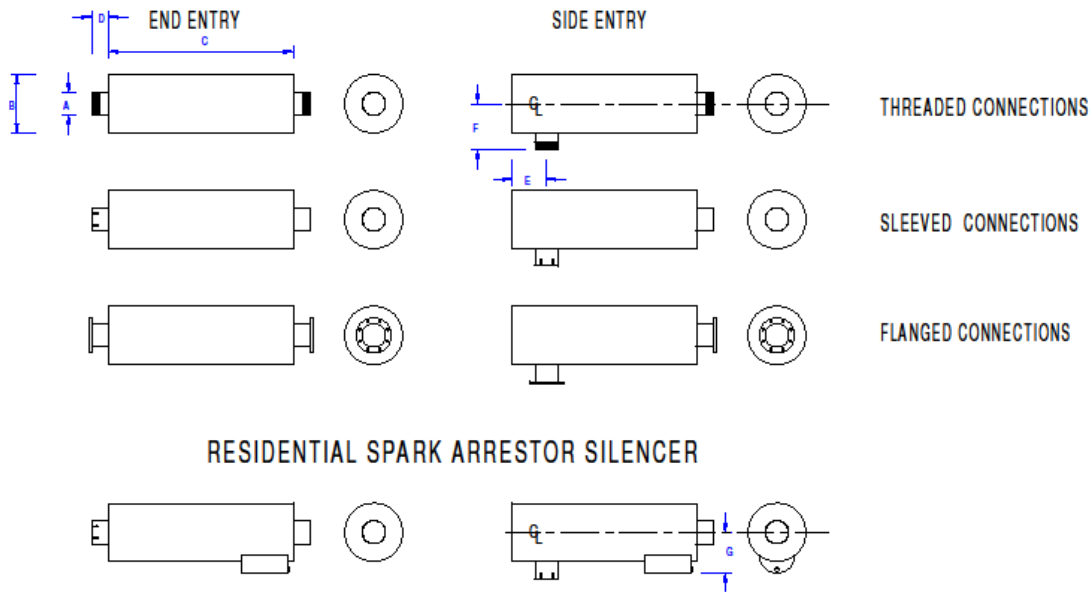
Residential Silencers

This silencer offers a higher attenuation than the industrial version.

It incorporates multiple chambers utilised to attenuate upper and lower frequency noise.



INDUSTRIAL/RESIDENTIAL/CRITICAL SILENCERS



Nominal Bore - A		Diameter - B		Length - C		D	E	F	Approximate Weight
mm	inch	mm	inch	mm	inch	mm	mm	mm	kg
25	1	125	5	470	18½	38	38	50	3.5
32	1¼	125	5	470	18½	38	38	50	3.5
38	1½	125	5	470	18½	38	50	98	3.5
50	2	140	5½	635	25	50	50	121	5.5
64	2½	178	7	749	29½	50	50	140	8
76	3	203	8	876	34½	50	63	152	15
89	3½	254	10	914	36	50	75	190	30
100	4	279	11	1054	41½	50	75	216	35
125	5	356	14	1054	41½	50	83	254	55
150	6	406	16	1219	48	76	95	279	75
200	8	508	20	1676	66	76	127	356	155
250	10	610	24	2134	84	76	152	406	250
300	12	762	30	2743	108	102	203	533	365

Sonic Silencers Limited
Registered in England 10627739

Richard.tanner@sonicsilencers.co.uk
+44 (0) 7720 706621



March 2017