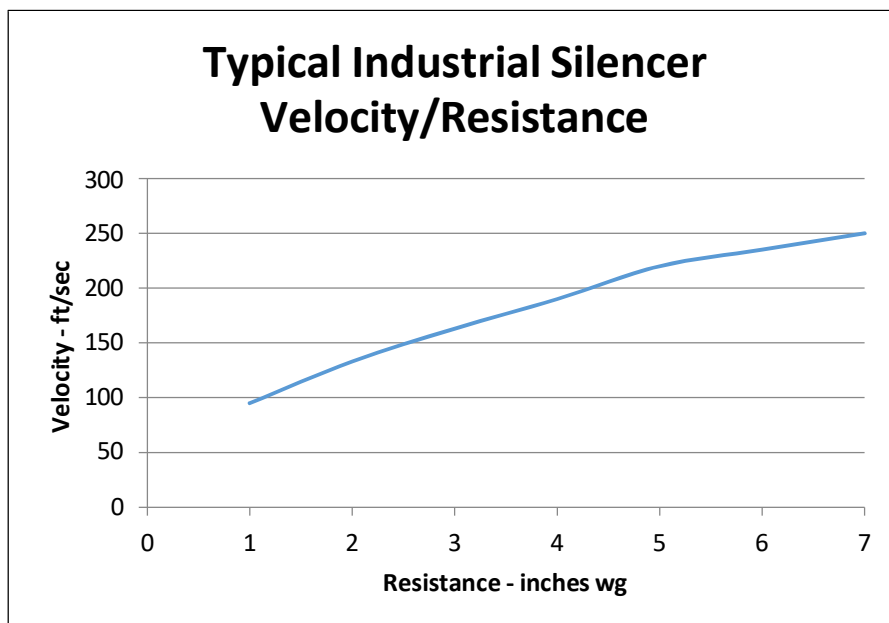
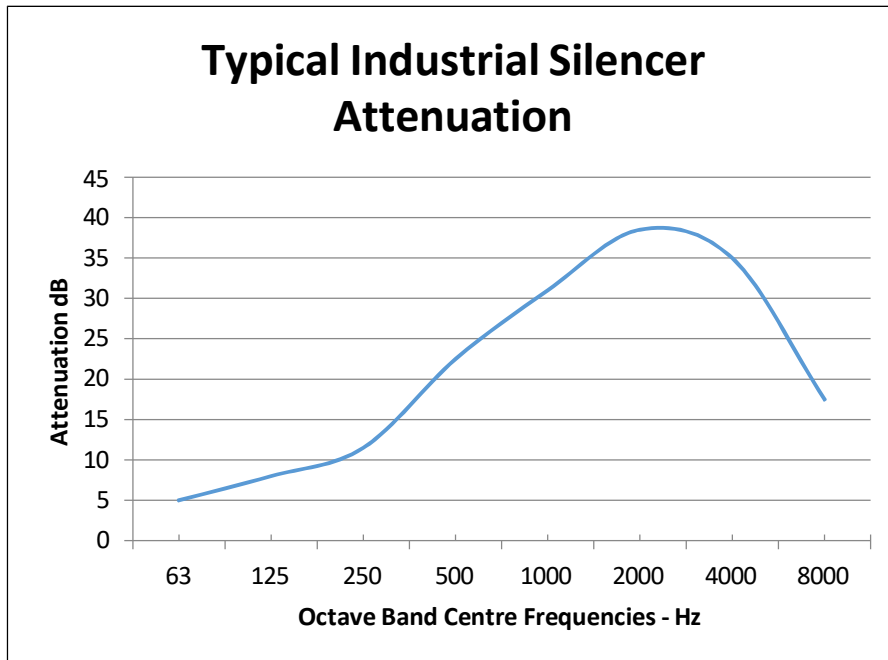
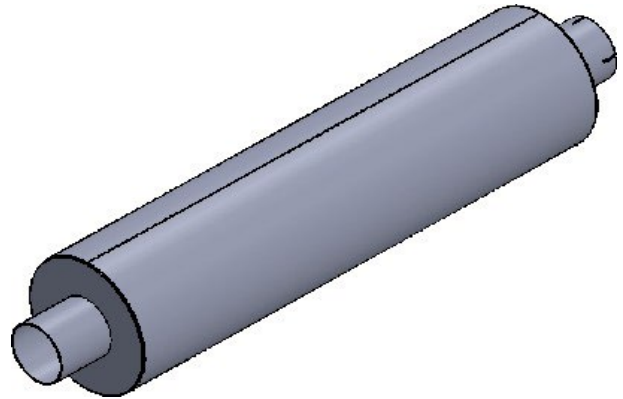


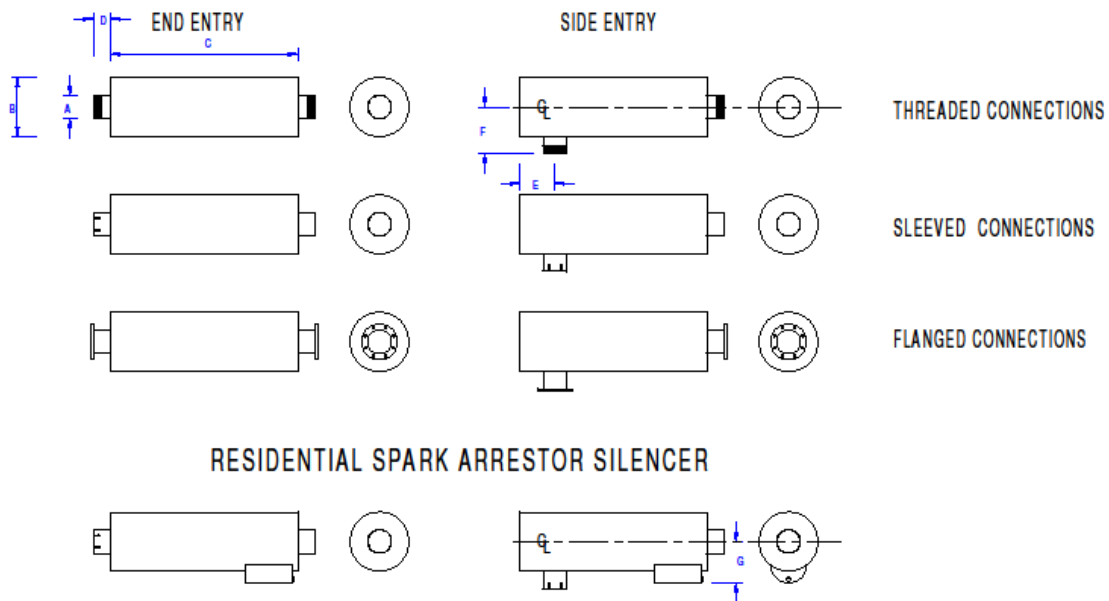
Industrial Silencers

This entry level silencer uses sound absorbing insulation to achieve the specified attenuation.

It offers the minimum resistance to flow of the Sonic silencer range.



INDUSTRIAL/RESIDENTIAL/CRITICAL SILENCERS



Nominal Bore - A		Diameter - B		Length - C		D	E	F	Approximate Weight	Capacity m ³ min
mm	inch	mm	inch	mm	inch	mm	mm	mm	kg	m ³
25	1	89	3½	381	15	38	38	50	2.5	0.5-0.8
32	1¼	89	3½	381	15	38	38	50	3	0.8-1.3
38	1½	125	5	610	24	38	50	50	5	1.3-1.8
50	2	140	5½	762	30	50	50	50	7	1.8-3.3
64	2½	152	6	762	30	50	63	75	10	3.3-5.0
76	3	178	7	762	30	50	63	75	12	5.0-7.5
89	3½	178	7	914	36	50	75	140	17	7.5-10
100	4	229	9	914	36	50	80	165	22	10-13
125	5	305	12	914	36	50	83	203	34	13-20
150	6	356	14	1219	48	76	102	254	61	20-30
200	8	406	16	1524	60	76	127	279	70	30-55
250	10	457	18	1829	72	76	203	305	140	55-80
300	12	610	24	2438	96	102	250	406	230	80-120
350	14	610	24	2438	96	102	250	406	240	120-160
400	16	762	30	2743	108	102	250	483	350	160-215
450	18	762	30	2743	108	102	280	483	370	215-270
500	20	762	30	3000	118	102	305	483	505	270-340
550	22	762	30	3200	126	102	330	483	550	340-400
600	24	810	32	3658	144	102	355	507	820	400-480

Sonic Silencers Limited
Registered in England 10627739

Richard.tanner@sonicsilencers.co.uk
+44 (0) 7720 706621

