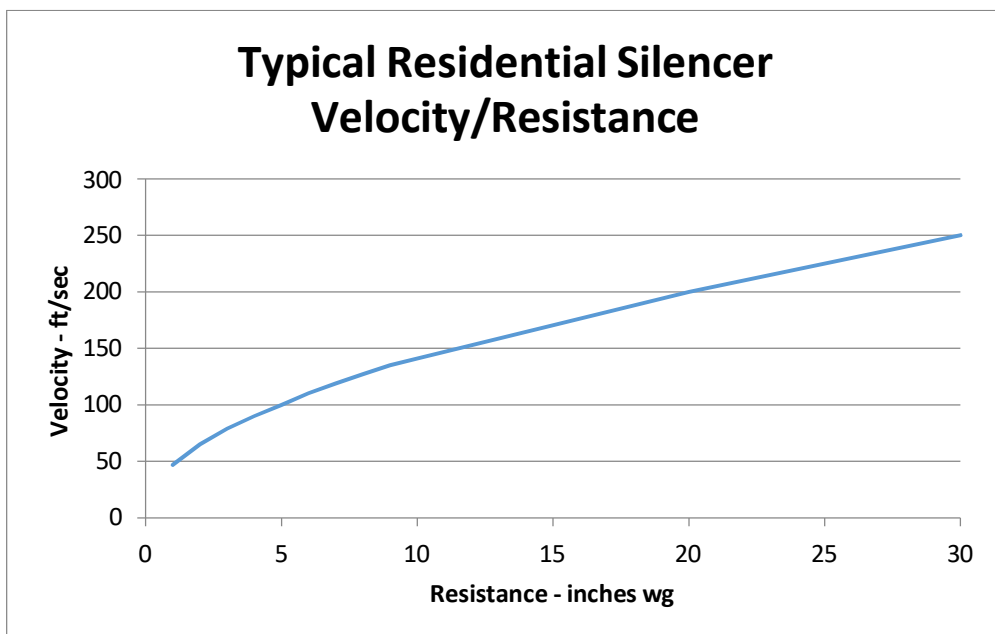
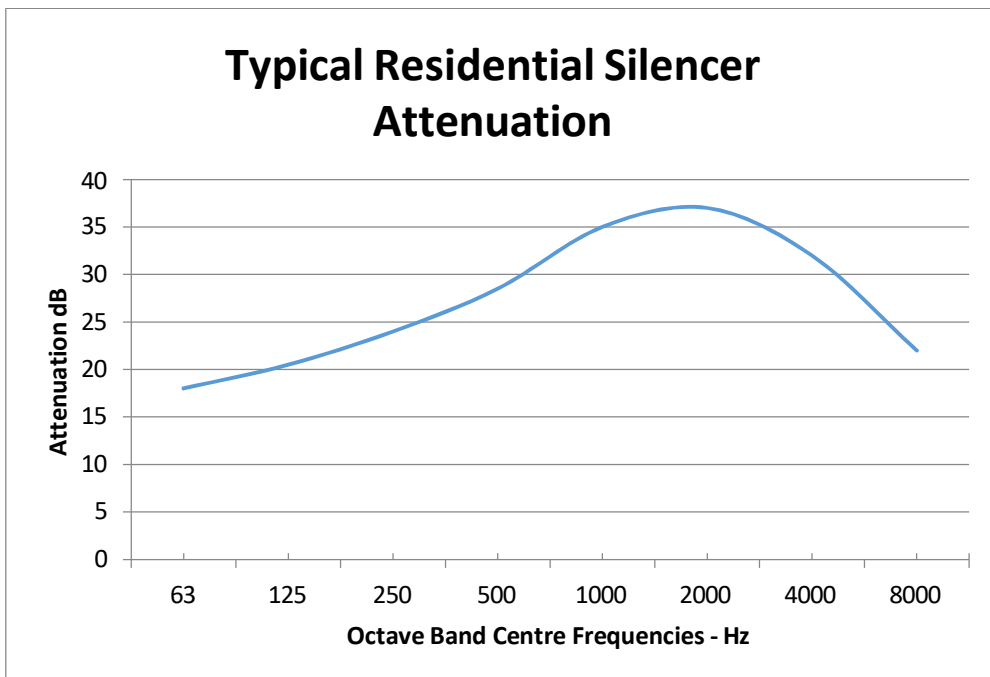
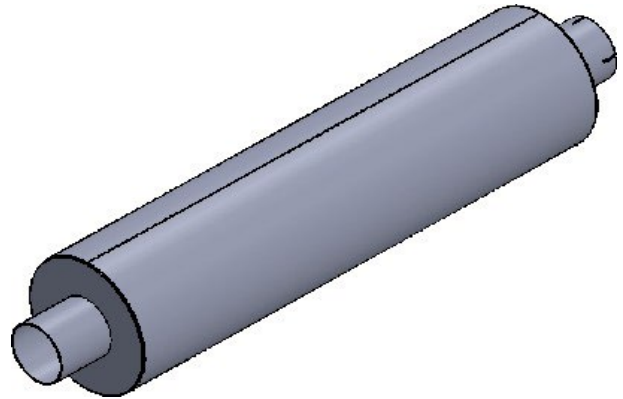


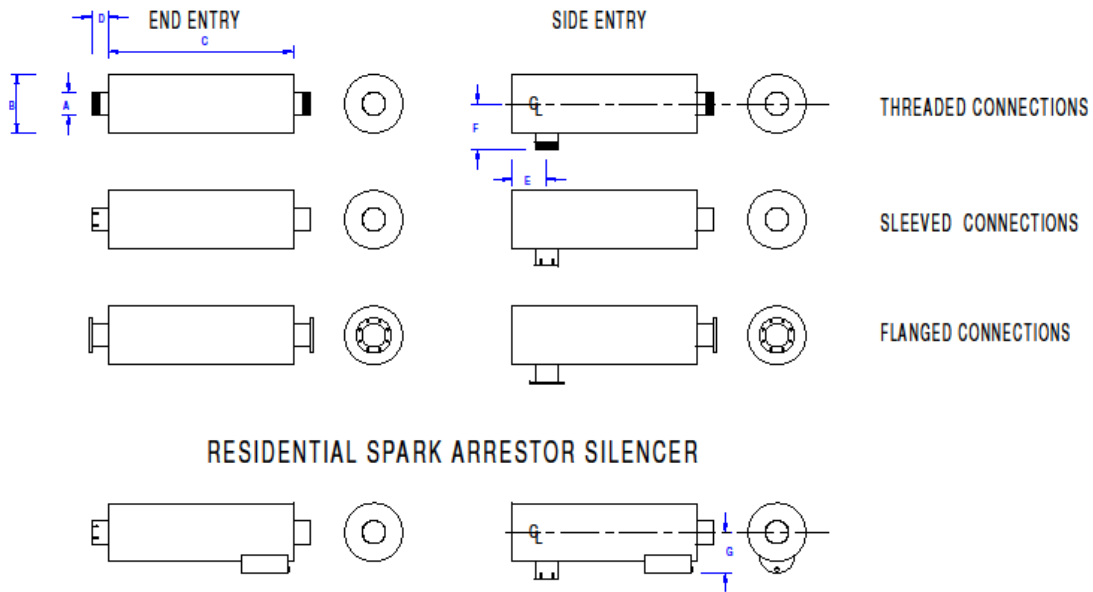
## Residential Silencers

This silencer offers a higher attenuation than the industrial version.

It incorporates multiple chambers utilised to attenuate upper and lower frequency noise.



## INDUSTRIAL/RESIDENTIAL/CRITICAL SILENCERS



Nominal Bore - A		Diameter - B		Length - C		D	E	F	Approximate Weight
mm	inch	mm	inch	mm	inch	mm	mm	mm	kg
25	1	125	5	470	18½	38	38	50	3.5
32	1¼	125	5	470	18½	38	38	50	3.5
38	1½	125	5	470	18½	38	50	98	3.5
50	2	140	5½	635	25	50	50	121	5.5
64	2½	178	7	749	29½	50	50	140	8
76	3	203	8	876	34½	50	63	152	15
89	3½	254	10	914	36	50	75	190	30
100	4	279	11	1054	41½	50	75	216	35
125	5	356	14	1054	41½	50	83	254	55
150	6	406	16	1219	48	76	95	279	75
200	8	508	20	1676	66	76	127	356	155
250	10	610	24	2134	84	76	152	406	250
300	12	762	30	2743	108	102	203	533	365

**Sonic Silencers Limited**  
Registered in England 10627739

[Richard.tanner@sonicsilencers.co.uk](mailto:Richard.tanner@sonicsilencers.co.uk)  
+44 (0) 7720 706621



March 2017